



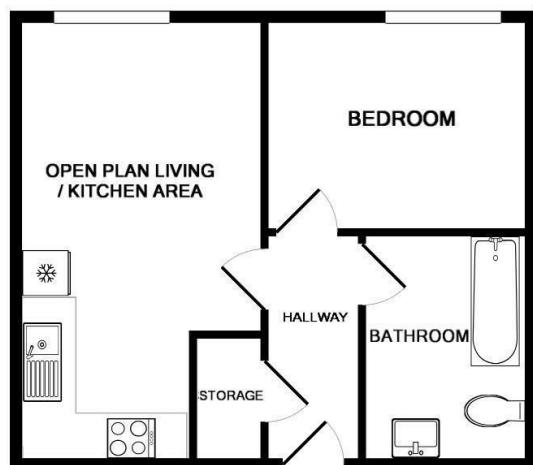
Apartment 25 Lion Court 100 Warstone Lane

Birmingham, B18 6DZ

£825 PCM



Floor Plan

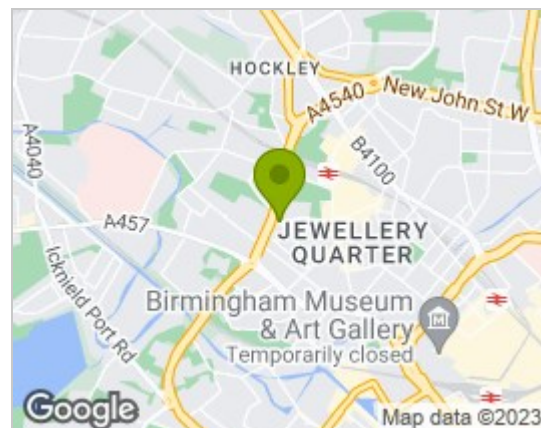


LION COURT

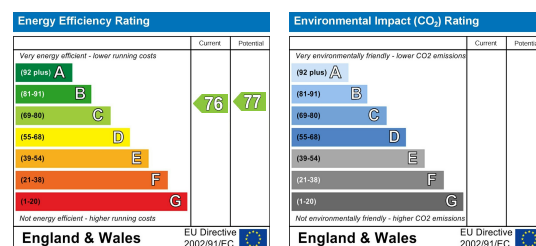
Whilst every attempt has been made to ensure the accuracy of the floor plan contained here, measurements of doors, windows, rooms and any other items are approximate and no responsibility is taken for any error, omission, or mis-statement. This plan is for illustrative purposes only and should be used as such by any prospective purchaser. The services, systems and appliances shown have not been tested and no guarantee as to their operability or efficiency can be given

Made with Metropix ©2018

Area Map



Energy Efficiency Graph



Viewing

Please contact our LV PROPERTY Office on 01212857575 if you wish to arrange a viewing appointment for this property or require further information.

- ONE BEDROOM APARTMENT ■ UPPER FLOOR
- COURTYARD FACING ■ DOUBLE BEDROOM WITH FITTED WARDROBE
- DECORATED TO A HIGH ■ FURNISHED STANDARD

LV PROPERTY is proud to present this well-presented bedroom apartment located on the first floor in the sought after Lion Court development situated in the ever-popular Jewellery Quarter.

The apartment comprises of entrance hall leading onto a bright, spacious open plan lounge and modern kitchen with ample storage and integrated appliances.

The double bedroom benefits from fitted wardrobes and views over the courtyard and a modern family bathroom with an over-bath shower

This Property further benefits from a storage cupboard, communal lift and secure intercom entrance.

The Jewellery Quarter dates back over 200 years and is a Conservation Area with over 200 listed buildings. At the centre of the Jewellery Quarter shopping area stands the Quarter's Chamberlain clock, this area had drawn much attention from London investors over the years and is fast becoming a popular place to live for young professionals. The property is located within a 5-minute walk to Jewellery Quarter train station. Parking permits are available on street through the council. Viewing is highly recommended.

EPC: C



These particulars, whilst believed to be accurate are set out as a general outline only for guidance and do not constitute any part of an offer or contract. Intending purchasers should not rely on them as statements of representation of fact, but must satisfy themselves by inspection or otherwise as to their accuracy. No person in this firm's employment has the authority to make or give any representation or warranty in respect of the property.



0121 285 7575
www.lvproperty.co.uk

157c Warstone Lane, Jewellery Quarter,
Birmingham, West Midlands, B18 6NZ